

**ITEM 8.           ITEM FOR COMMITTEE INFORMATION – PARKING – ELIZABETH  
STREET BETWEEN LIVERPOOL AND BATHURST STREETS  
SYDNEY**

**TRIM RECORD NO:   2016/122898**

**RECOMMENDATION**

It is recommended that the Committee note the following reallocation of parking:

- (A) Western side of Elizabeth Street, between Liverpool Street and the point 18.5 metres, north of Liverpool Street as “No Stopping Australia Post Vehicles Excepted”;
- (B) Western side of Elizabeth Street, between the points 18.5 metres and 77.6 metres, north of Liverpool Street as “No Stopping 6am-10am 3pm-8pm Mon-Fri”, “Loading Zone Ticket 10am-3pm Mon-Fri 6am-10am Sat” and “4P Ticket 8pm-12am Mon-Fri 10am-10pm Sat 8am-10pm Sun & Public Holidays”;
- (C) Western side of Elizabeth Street, between the points 77.6 metres and 97.8 metre, north of Liverpool Street as “No Stopping 6am-10am 3pm-8pm Mon-Fri” and “No Parking Other Times”;
- (D) Western side of Elizabeth Street, between the points 97.8 metres and 159.3 metres, north of Liverpool Street as “No Stopping 6am-10am 3pm-8pm Mon-Fri”, “Loading Zone Ticket 10am-3pm Mon-Fri 6am-10am Sat” and “4P Ticket 8pm-12am Mon-Fri 10am-10pm Sat 8am-10pm Sun & Public Holidays”;
- (E) Eastern side of Elizabeth Street, between the points 188.8 metres and 245.2 metres, south of Park Street as “Bus Zone”, and “Bus Lane 6am-8pm Mon-Fri 10am-6pm Sat, Sun & Public Holidays”;
- (F) Eastern side of Elizabeth Street, between the points 245.2 metres and 328.5 metres, south of Park Street as “Bus Lane 6am-8pm Mon-Fri 10am-6pm Sat, Sun & Public Holidays”, “4P Ticket 6am-10am Sat, Sun & Public Holidays” and “Taxi Zone Other Times”;
- (G) Changes to lane configuration in Elizabeth Street, between Liverpool and Bathurst Streets, for the provision of bus lanes; and
- (H) The City, in conjunction with TfNSW, to review the provision of parking in Elizabeth Street, between Liverpool and Bathurst Streets, six months after implementation.

**DECISION**

**BACKGROUND**

On 19 December 2013, the NSW Government adopted the Sydney City Centre Access Strategy (Access Strategy). The Access Strategy will deliver a fully integrated transport network in Sydney’s City Centre that puts the customer first and meets the growing transport task. It will mean more people use public transport to access the City Centre and it will change the way people move around within it.

The Access Strategy considers all transport modes and demonstrates how light rail, buses, trains, ferries, cars, taxis, pedestrians and cyclists will interact in the heart of Sydney. The Access Strategy also provides a clear direction for how all the different transport modes will work together in the Sydney CBD to reduce congestion, provide for future growth and improve the customer experience.

The Sydney City Centre Bus Plan (SCCBP) forms part of a suite of transport improvements associated with the Access Strategy and includes:

- New dedicated Bus Lanes, Bus Stops and shelters;
- Modifying kerbs and footpaths, line markings and medians; and
- Removing and relocating some taxi ranks, Loading Zones and on-street parking spaces.

The SCCBP aims to:

- Provide a more efficient bus network that is easier for customers to use and understand;
- Create bus corridors within the CBD that improve links to key destinations and improve connectivity with other transport modes; and
- Relocate existing bus routes on George Street to enable delivery of the CBD Light Rail.

The SCCBP will be delivered by Roads and Maritime Services (RMS), in conjunction with Transport for New South Wales (TfNSW) and the City of Sydney.

## **COMMENTS**

The kerb space on the western side of Elizabeth Street between Liverpool and Bathurst Streets is generally signposted as “Bus Zone”. A Bus Lane currently operates on the western side of Elizabeth Street between 8am to 10am and 3pm to 6pm, Monday to Friday.

Elizabeth Street between Liverpool and Bathurst Streets is identified in the Access Strategy as a key bus corridor. The bus corridor includes “No Stopping”, “Bus Zone” and “Bus Lane 6am-8pm Mon-Fri 10am-6pm Sat”.

Where possible, loading, taxi and parking for people with disabilities will be distributed to neighbouring streets, contained within the proposed changes for the bus and cycleway plans.

## **CONSULTATION**

The RMS publically exhibited the Review of Environmental Factors (REF) from 23 June to 25 July 2014. Notification of the REF included a letterbox drop to 36,000 properties, a dedicated website, a drop-in centre and visits and meetings with 200 stakeholders within the affected area.

Of the 36,000 letters distributed, the RMS received 60 submissions. Of these 17 supported the proposal, 31 opposed the proposal and 12 where neutral.

Submissions opposing the proposal were concerned about the loss of loading and parking spaces, increased noise and impact to business.

Submissions supporting the proposal believed the proposal would improve public transport access to the City and reduce general traffic congestion.

Included in the consultation process, meetings were held with individual stakeholders who raised concerns about the proposals. The proposal was amended based on these concerns to better meet the needs of the community within the allowable scope of the project objectives.

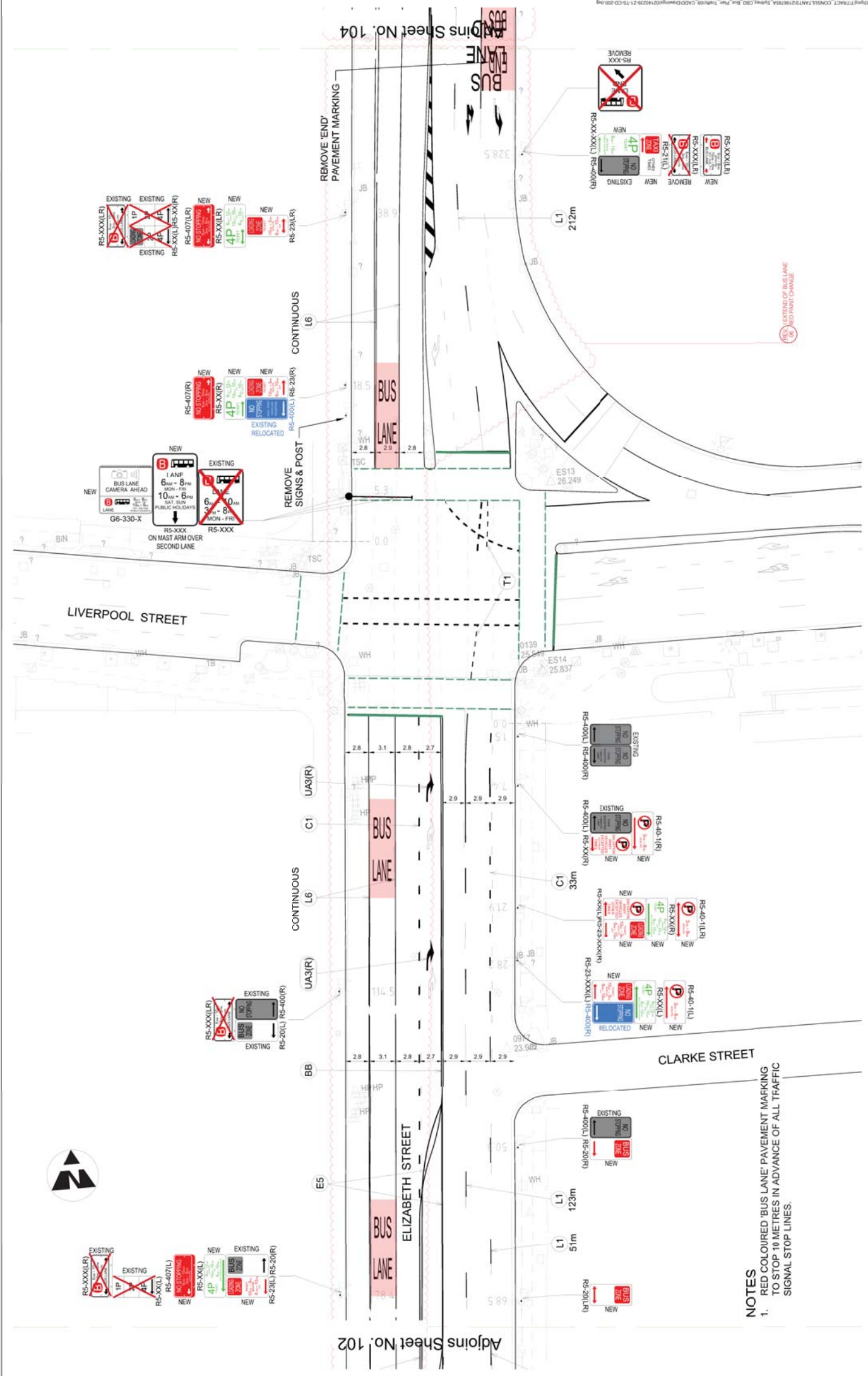
**FINANCIAL**

The SCCBP is being fully funded by the NSW State Government.

**ATTACHMENTS**

Item for Committee Information – Parking – Elizabeth Street between Liverpool and Bathurst Streets Sydney

Stephen Sherwin, Project Manager – Roads and Maritime Services

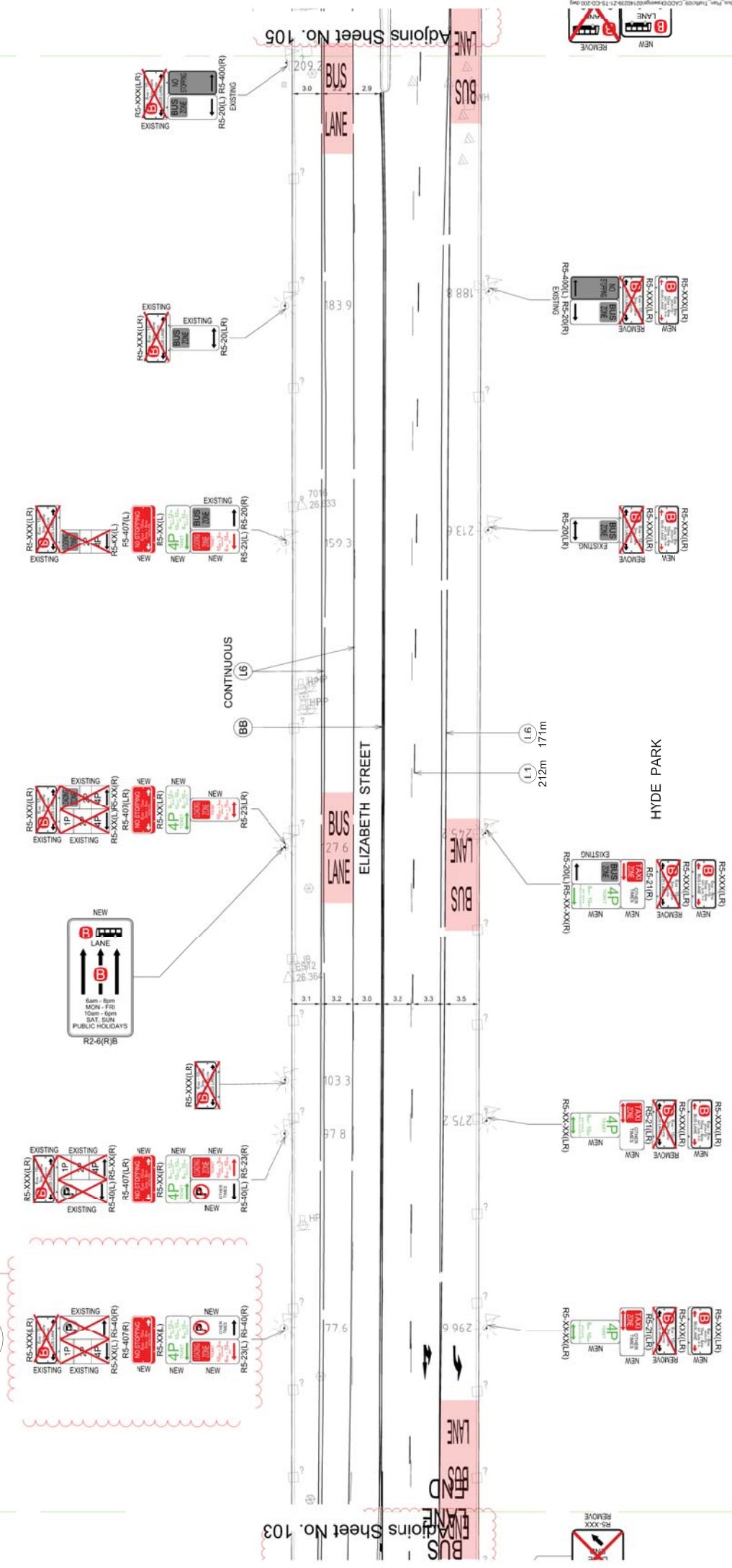


**NOTES**  
 1. RED COLOURED 'BUS LANE' PAVEMENT MARKING TO STOP 10 METRES IN ADVANCE OF ALL TRAFFIC SIGNAL STOP LINES.

<p>TRAFFIC SIGNAGE PLAN          ELIZABETH STREET          SHEET 4 OF 12</p> <p>Project: 143390 - Upgrade of Elizabeth Street          Date: 20.08.2024          R.W. 1:1          A.O. 1:1</p>	<p>landscaping architects          planners &amp; urban designers  <b>tract</b></p> <p>Level 8, 85 Macquarie Street          Sydney NSW 2000          Tel: 61 61 9551 3333          Fax: 61 61 9551 3332          Email: info@tract.com.au</p>	<p><b>PARSONS BRINCKERHOFF</b>          The new state of business</p> <p>Level 27, 666 George Street          Sydney NSW 2000          Telephone: +61 2 9272 5100          Facsimile: +61 2 9272 5101          Email: parsons@parsons.com</p>	<p>SYDNEY CITY CENTRE          BUS INFRASTRUCTURE</p> <p>NSW ALLIANCE</p>
---	--	---	---



REV. 05  
1. MAIL ZONE REMOVED AND REPLACED WITH BUS ZONE



**NOTES**  
1. RED COLOURED 'BUS LANE' PAVEMENT MARKING TO STOP 10 METRES IN ADVANCE OF ALL TRAFFIC SIGNAL STOP LINES.

Adjoins Sheet No. 103

Adjoins Sheet No. 105

Item	Description	Date	By
11	DESIGN FOR CONSTRUCTION	13/11/14	JAD
12	REVISION FOR CONSTRUCTION	18/03/15	JAD
13	REVISION FOR CONSTRUCTION	18/03/15	JAD
14	MAIL ZONE	11/07/16	JM
15	REVISION FOR CONSTRUCTION	11/07/16	JM
16	REVISION FOR CONSTRUCTION	11/07/16	JM

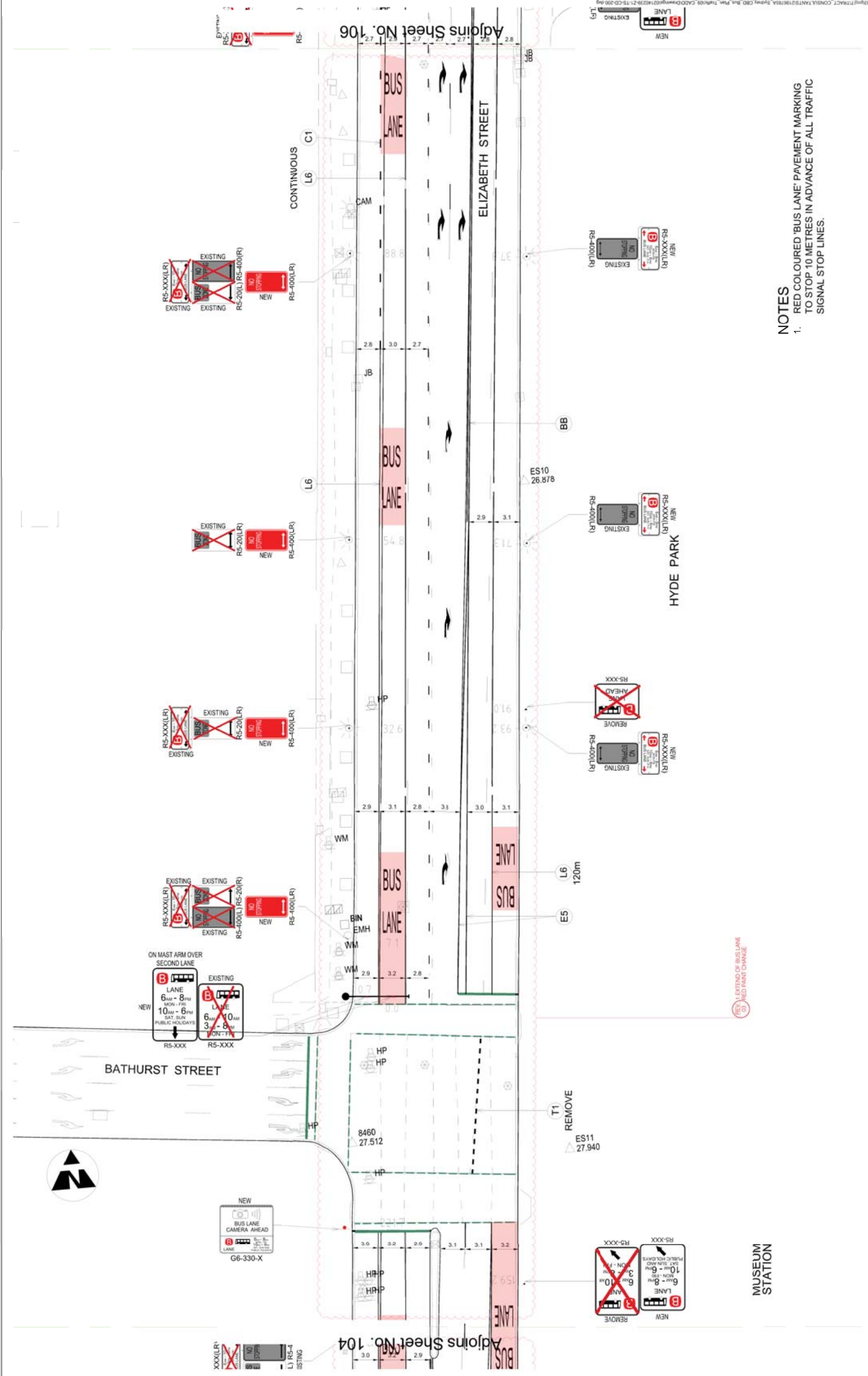
TRAFFIC SIGNAGE PLAN			
ELIZABETH STREET			
SHEET 3 OF 12			
Project No.	Client	Date	Scale
1529751	Sydney City Centre	28/08/2014	1:200
Project	Author	Checked	Drawn
BUS INFRASTRUCTURE	JAD	JAD	JAD
A.C.T.	R.W.	A.C.T.	R.W.
1:200	1:200	1:200	1:200



**landscape architects**  
**planners & architects**  
PLANETREE ARCHITECTS  
1529751  
15/09/14 11:01 (07609) 200



**PARSONS BRINCKERHOFF**  
Level 27, Epsom & Young Courts  
666 George Street  
Sydney, NSW 2000  
Australia  
Telephone +61 2 9272 5100  
Facsimile +61 2 9272 5111  
Email: [plan@pbr.com.au](mailto:plan@pbr.com.au)



- NOTES**
- RED COLOURED 'BUS LANE' PAVEMENT MARKING TO STOP 10 METRES IN ADVANCE OF ALL TRAFFIC SIGNAL STOP LINES.

<p>TRAFFIC SIGNAGE PLAN ELIZABETH STREET SHEET 6 OF 12</p> <p>Project: SYDNEY CITY CENTRE BUS INFRASTRUCTURE</p> <p>Scale: 1:500</p> <p>Author: [Name]</p> <p>Date: 20/08/2014</p>	<p>landscape architects planners &amp; urban designers</p> <p>Parsons Brinckerhoff Level 27, E-mail &amp; Young Centre 680 George Street Sydney NSW 2000 Telephone +61 2 9272 5100 Facsimile +61 2 9272 5101 Email: Sydney@parsonsbrinckerhoff.com</p> <p>ANZ 601 078 004 796</p>	<p>NSW The new state of business</p>	<p>TRACT</p> <p>SYDNEY CITY CENTRE BUS INFRASTRUCTURE</p>
--	---	--	---

These drawings, plans and specifications and the copyright therein are the property of TRACT CONSULTANTS PTY LTD. and must not be used, reproduced, copied, altered or in part without the written permission of TRACT CONSULTANTS PTY LTD.